



145 Ringinglow Road

Ecclesall, Sheffield, S11 7PS

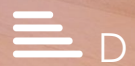
£3,500 PCM

This beautifully styled and immaculately presented detached house is situated on a generous and landscaped south facing plot. AVAILABLE 18TH MARCH 2026

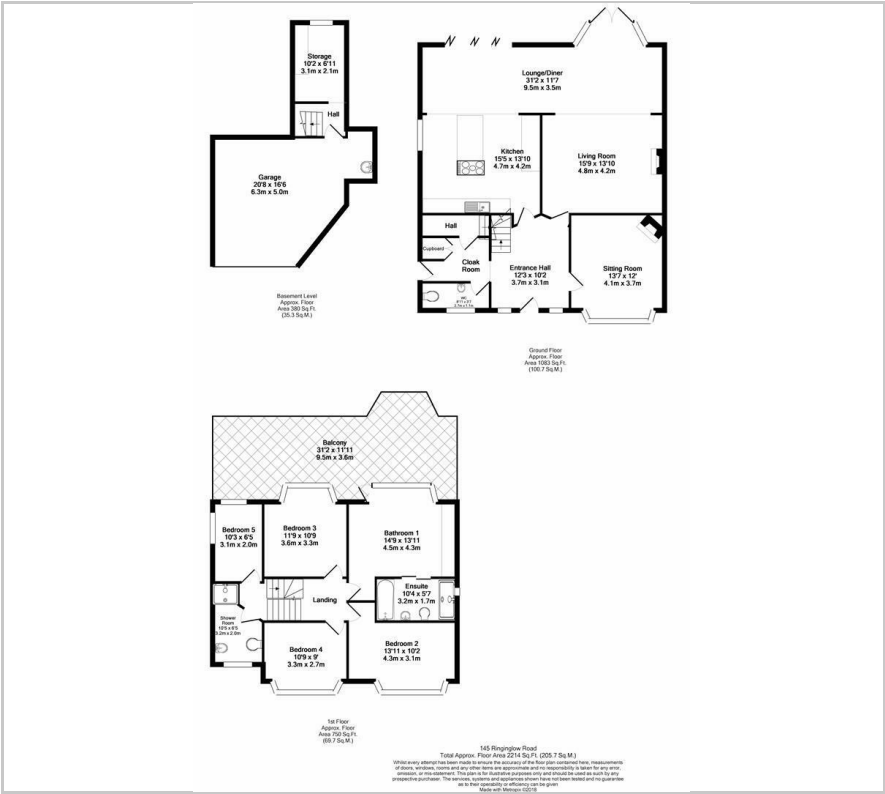
- Impressive reception hall with parquet flooring and a feature curved staircase
- Porcelain tiled flooring (heated) and aluminium bi-fold
- Designer glass fronted with Miele appliances and Silestone work surfaces
- Open plan dining/living area with a contemporary gas fire
- Versatile second sitting room with bay window and fireplace
- Five bedrooms including four doubles (two of which have fitted wardrobes)
- Two bath/shower rooms and a ground floor W.C.
- Stunning roof terrace with chrome and glass balustrade offering far reaching views
- UNFURNISHED - AVAILABLE 18TH MARCH
- COUNCIL TAX BAND: G

Viewing

Please contact our ELR Europa Link Office on 01142689900 if you wish to arrange a viewing appointment for this property or require further information.



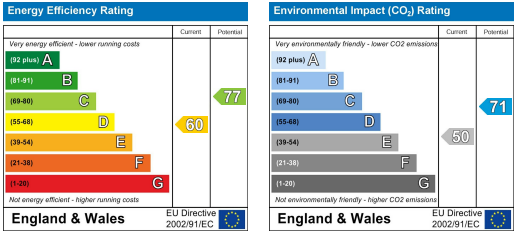
Floor Plan



Area Map



Energy Efficiency Graph



These particulars, whilst believed to be accurate are set out as a general outline only for guidance and do not constitute any part of an offer or contract. Intending purchasers should not rely on them as statements of representation of fact, but must satisfy themselves by inspection or otherwise as to their accuracy. No person in this firm's employment has the authority to make or give any representation or warranty in respect of the property.